

Rose, Howard & Vail

Specials For Saturday

Smoked Hams	Best grade	per lb.	20c
-------------	------------	---------	-----

Picnic Hams	Smoked, mild cure 6 to 8 lb. average	per lb.	12 $\frac{1}{2}$ c
-------------	---	---------	--------------------

Sausage	Pure pork	per lb.	15c
---------	-----------	---------	-----

Hamburg			15c
---------	--	--	-----

Pure Lard		per lb.	12 $\frac{1}{2}$ c
-----------	--	---------	--------------------

Bologna	Home made	per lb.	15c
---------	-----------	---------	-----

Frankfurters	Large size Home made	per lb.	15c
--------------	-------------------------	---------	-----

Plenty of Home Dressed Chicken & Veal
Cattle and Hogs Wanted

C. H. BOWERS
MANAGER

A. A. ROSE
FRED VAIL
PROPRIETORS

ROSEVALE PACKING CO.

WHOLESALEERS

Rosevale Brand Fresh, Cold and Smoked Meats

DEWITT, MICHIGAN

TELEPHONES 89 AND 101
DEWITT, MICHIGAN

PHONE TEMPLE 1-0415
DETROIT, MICHIGAN

December 1941



GREETINGS

In behalf of the Rosevale Packing Company, I take this opportunity to thank you for your loyal co-operation and support for the past year.

For your past services with the Company, here is a little Christmas Greeting.

Wishing you a Merry Christmas and a Happy New Year.

ROSEVALE PACKING COMPANY,

C. H. Bowers
Manager

P.S. In as much as the employee's time and position are of different lengths and natures, the Christmas Greeting varies in amount. Therefore, this is yours, to be held strictly confidential with fellow employees or the world in general. Thanks!

November 30, 1940.

Enclosed find check for your wages in full. Your services
are not required by The Rosevale Packing Company after noon
November 30, 1940.

Signed

H. Bowen
Manager

Quality Cash Market

"The Market 'Round the Corner."

You can save money by trading at VAIL & HOWARD'S CASH AND CARRY MARKET.

Our prices are the same through the week as on Saturday. Here are just a few of our prices:

RIB STEWS, off good steers, per lb. -----	7c
BEEF ROAST, per lb. -----	10c
BEST MEATY PIECES and Arm cuts, lb.	15c
PURE LARD at wholesale, lb. -----	13c
SALT PORK, per pound -----	10c
BACON IN CHUNK, per lb. -----	23c
LAMB STEW, per lb. -----	15c
VEAL STEW, per lb. -----	15c
ROUND STEAK, per lb. ---	23c

We have plenty of those juicy Porterhouse Steaks and Center cuts of Ham, Veal Cutlets, Fresh Killed Lambs and Cold Meats of all kinds.

WE HANDLE HIGH QUALITY MEATS ONLY.

Ormston's Cream and Livingston's Jersey Milk.

No Deliveries—Strictly Cash and Carry.

Vail & Howard

WE CLOSE AT 10 O'CLOCK SHARP SATURDAY NIGHTS.

Our Offering for Dollar Day

9 lbs. Fresh Pork Hams	\$1.00
8 lbs. Boneless Corn Beef	\$1.00
8 lbs. Pure Lard	\$1.00
8 lbs. Side Pork	\$1.00
8 lbs. Salt Pork	\$1.00

Rose, Howard & Vail

The Market Around the Corner

C.R.
H-10-1934

**When
the
Meal
is
Over**

**TURKEY
DAY**



You like to feel that all have enjoyed it, as you feel repaid for being careful in your selection of the bird. We have a fine lot of crate fattened Turkeys and will be pleased to help you make your meal a success.

Call us and let us put aside just the fowl you want

**We also carry a full line of quality Beef,
Pork and Veal**

Rose, Howard & Vail

"The Market Round the Corner"

Advertising that pays grows—Advertising that grows pays
—Advertising in The Clinton County Republican does both.

C.R.
11-22-1923

ROSE

M E A T S

VAIL

PEOPLES CASH MARKET

SPECIALS FOR FRIDAY AND SATURDAY

Hamburg It's Good **10c lb.**

Beef Roasts

Bread 3 Loaves for **19c**

Sausage 10c lb.

Best Cuts

9 lbs. for \$1.00

Beef Ribs Meaty **3 lbs. for 25c**

CR
6-11-1931

Rose & Vail Will Replace Big Plant Razed By Flames

"We have started cleaning up the wreckage and hope to have our plant back in running order in about two months," says Fred Vail of the Rose & Vail firm who lost the big slaughter-house at their meat packing plant in Dewitt township in a \$50,000 fire last Thursday morning. "When we rebuild we will have a more modern and better equipped plant than the one we lost," he said.

The Rose & Vail plant employs about 20 men and dresses out several carloads of meat weekly to supply its 12 retail stores and three rural trucks.

Clinton County Republican
New May 7-1931

PICKETS PROTEST LAY-OFF AT PLANT

Rosevale Packing Company Manager Denies Strike at DeWitt Establishment

Approximately 75 pickets representing a union reported to be affiliated with the C. I. O. were picketing the Rosevale Packing company plant at DeWitt Monday morning following the layoff Saturday of about 100 workers.

Ed Ward, DeWitt, a Clinton county deputy sheriff, estimated that between 150 and 200 men had been employed at the packing house and said he could not tell what the labor dispute was "all about."

C. H. Bowers, manager of the Rosevale company, said there was no strike. He declared that lack of work necessitated the lay-off of about 100 employes and said the pickets were former employes. He said he heard the C. I. O. had been attempting to organize the plant.

Mr. Bowers said there had been no pay cuts in the plant and all employes laid off had been paid in full. Deputy Sheriff Ward said the picketing was peaceful.

Union spokesmen here said several men in the plant had joined the C. I. O. Packing House Workers organization and that on Saturday they were "locked out" by the Rosevale management. They said the plant management wanted to remain closed until it could reopen with non-union employes.

U. S. BOARD TO GET ROSEVALE DISPUTE

Laying off of nearly 100 employees of the Rosevale Packing company plant at DeWitt was appealed late Monday to the federal labor board in Detroit by the Packing House Workers Organizing committee, a C. I. O. affiliate.

The union contends that the men, 90 percent of whom were union members, were discharged because of union activities. It was pointed out that the union has no contract with Rosevale in DeWitt and was not engaged in negotiations or having any dispute with the management when the alleged "lockout" occurred.

What the union called a "defense line" was thrown around the Rosevale plant Monday with about 75 men picketing. They set up headquarters in a nearby building and said they were defending the jobs from which they had been discharged.

A union official said that the Rosevale plant in Detroit is a union plant and workers there have refused to accept shipments from DeWitt since Saturday. The union, he said, also is centering its attack in Lansing and Flint where groceries and restaurants that buy Rosevale products are being urged to support the union until the men are rehired.

The federal labor board, according to G. S. Jones, local organizer for the C. I. O., expects to hold a hearing late Tuesday or Wednesday in Detroit.

The plant management Saturday included notices with pay checks informing the employees their services were no longer required. The management subsequently claimed the layoff was due to lack of business.

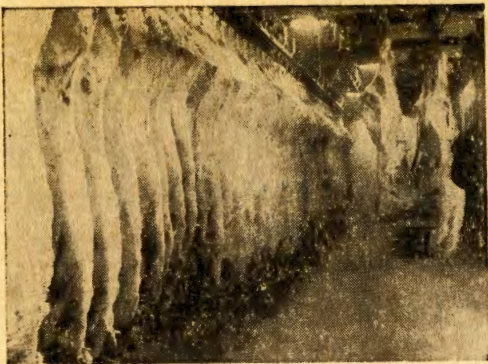


State Journal
1928-1955

Pictured above is the spacious Rosevale Packing Company plant, serving the entire southern half of the state with meat and meat products from this woodland setting one mile east of DeWitt.

ROSEVALE PACKING CO.

The "Unexcelled Brand"



These prime beef-halves, pictured in one of the Rosevale cooling lockers, were fattened on Michigan farms, and after cutting and processing will be on their way again . . . to the better retail grocery and meat dealers, restaurants and hospitals throughout central and southern Michigan. Note how clean this locker appears. Rosevale's own rigid sanitation control is under the constant supervision of a full time government inspector assigned permanently to the plant.

Capable personnel, dependable equipment, a modern plant . . . Rosevale Packing Company has all of these, of course . . . but alone they do not add up to the growth and development enjoyed by this company through the years.

When the Rosevale label first appeared in the early "20's" it was recognized as a symbol of quality. Careful processing of meat and meat products, with all efforts directed toward producing the "unexcelled brand" . . . has built Rosevale Packing Company into a major concern serving, today, the entire southern half of the state.

The next century will see many changes at Rosevale, as even further improvements are made in the packing industry . . . but the year 2055 will find Rosevale Packing Company still serving the people of Michigan with the best in meat and meat products . . . with the "unexcelled brand."

and meat dealers, restaurants and hospitals throughout central and southern Michigan. Note how clean this locker appears. Rosevale's own rigid sanitation control is under the constant supervision of a full time government inspector assigned permanently to the plant.

the people of Michigan with the best in meat and meat products . . . with the "unexcelled brand."



Juicy hams, lean bacon, skinless franks, cold-cuts, chili sticks, lard . . . these are a few of the many processed meats and meat products you will find under the Rosevale "unexcelled brand".